

HOTEL INFORMATION

Hotel name :	Baan Samui Resort
Category :	First Class 3.5 Star
Opening Date :	January 01 , 1994
Key Landmarks :	Center of Chaweng Beach, Koh Samui Suratthani, Thailand.

GENERAL INFORMATION

Baan Samui Resort is located on the secluded and enchanting Chaweng beach, far from the ordinary and the mundane. Step into the colour and the beauty of this amazing hideaway. Sit back relax and absorb the serene and exotic atmosphere. Your dreams can become reality at Baan Samui Resort.

ADDRESS & LOCATION



1. Baan Samui.
2. Samui Airport 7 Kms.
3. Ferry Pier 25 Kms.
4. Samui Town 25 Kms.
5. Namuang Waterfall 22 Kms.
6. Lamai Beach 12 Kms.



ACCOMMODATION & ROOM FACILITIES

79 Total Rooms

Room Types	Total	Double	Twin	Room Size (sqm)	Balcony Size (sqm)	Room size With balcony (sqm)	Bed configuration	
							Max Pax	Guide to Bedding Bedroom
Deluxe Garden View	47	28	19	28	3.91	31.91	3A or 2A + 1C	2 Single or 1 King
Superior Deluxe Ground Floor Garden View	28	17	11	28	4.94	32.94	3A or 2A + 1C	2 Single or 1 King
Junior Suite Garden View	3	3	-	45	14.8 – 23.16	59.8 – 68.16	3A or 2A + 1C	1 King
Family Suite Pool View	1 Unit	1	1	71.63	12.48	84.11	6A or 4A + 2C	2 Single and 1 King

Facilities : Bath tub & shower, hot/cold water, air condition, SDC telephone, TV, refrigerator, private balcony, room service, safety box, coffee & tea set, hair dryer, slippers, bathrobe, umbrella & etc.

Electricity : 220 volts 50 Hz. (Adaptors are available on request)

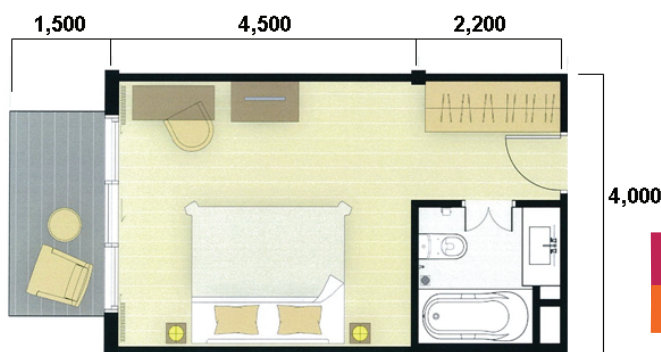
Credit Cards : American Express, Master Card, Visa Card.

Check in time : 02:00 p.m.

Check out time : 12:00 p.m.



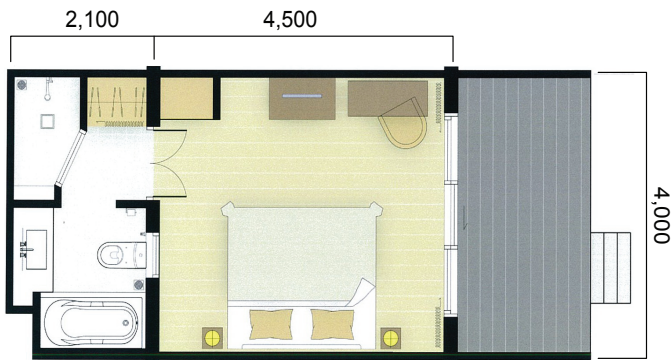
ROOM PLAN



Deluxe Room

Situated on the 2nd and 3rd floors and shaded by tropical gardens and view. The Deluxe rooms are comfortably furnished with a unique decor and intricate patterns. Warmth the comfort dominate the look and feel of this space.

ROOM PLAN



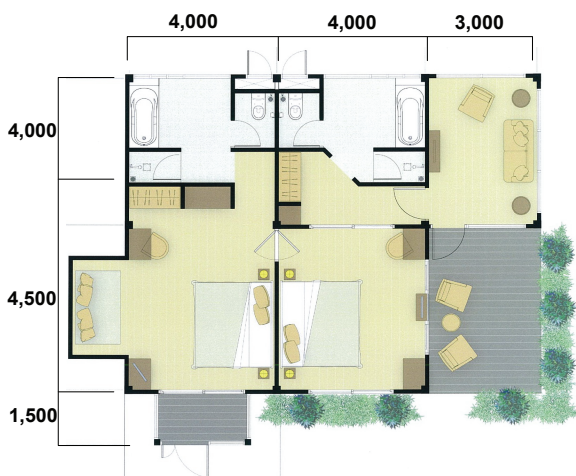
Superior Deluxe

All on the ground floor, with few steps through the gardens before you approach Chaweng beach itself. With a separate bath and shower, this room has every amenities possible. Bright and modern with a hint of "Thainess" make this room was designed for perfect relaxation. Wonderful garden view.



Junior Suite ground floor

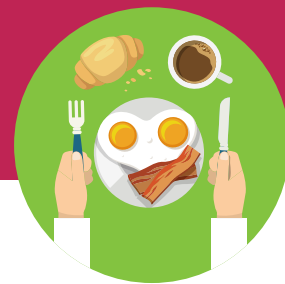
Intimate and serene, the Junior Suite on the ground floor has A decadent pool view. A spacious bed room, closet, bath and separate shower makes this room perfect for a private relaxation. The generous balcony affords the room extensive views over the pool and gardens.



Family Suite

Grand, yet private this new Suite Stands directly at the rim of the main pool. Offering a full view of the main pool, the beach and ocean beyond. Spacious and exclusive, this suite for those looking for a private space in the middle of paradise

FOOD & BEVERAGE



Name of Restaurant	Details	Service Time	Capacity
Moon Dance Restaurant & Bar	International cuisine, fresh seafood, pizza and pasta with open air setup so that you can enjoy sea breeze and music. Various and exotic drinks are also available near the swimming pool and beach side.	11:00 a.m.- 11:00 p.m.	80 seats
Moon Walk Restaurant (Breakfast Room)	Daily American Buffet Breakfast	07:00 a.m.- 10:00 a.m.	80 seats
Moon Walk Restaurant & Bar	International cuisine, pasta, fresh seafood, B.B.Q., steak corner, with open air set up and enjoy with live music in the park on most nights. Various and exotic drinks are also available. Located at the front of the hotel.	06:00 p.m.- Midnight.	80 seats
Pool Side	Drinks & Snacks	11:00 a.m.- 06:00 p.m.	80 seats
Room Service	Thai & International cuisine	07:00 a.m.- 11:00 p.m.	

Library & Internet room:

Service : 24 hrs.

SPECIAL EVENTS & THEME NIGHT:

Moon Dance Restaurant & Bar

*Steak Night, Thai Night, B.B.Q, Night Beach Front

Moon Walk Restaurant & Bar

*Live Music in the park

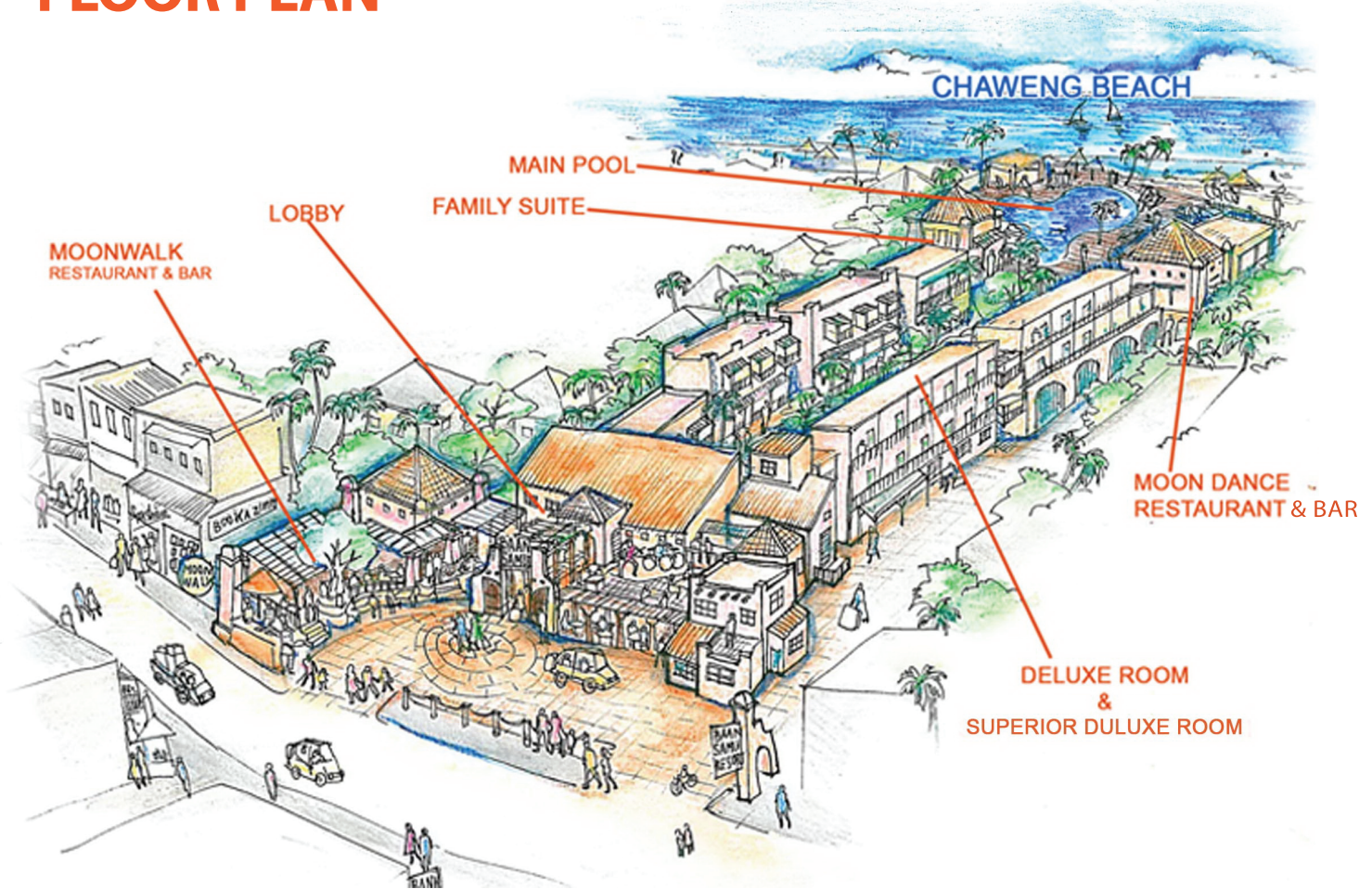
INFORMATION



GENERAL FACILITIES

Shopping center (next to the hotel), laundry, money exchange, deposit box, children's pool, out-door swimming pool at beach front, Library and Internet Corner, Thai massage at beach front, car rent, baby sitter, medical service on call, tour desk, airline confirmation, airport transportation, mailing, newspaper, facsimile, photocopy, water sports, sailing, jet skies, scuba diving (not operated by hotel), etc.

FLOOR PLAN



CONTACT DETAIL

Baan Samui Resort : 14/7 Moo 2, Chaweng Beach, Koh Samui Suratthani 84320, Thailand.
Tel : +66(0) 77 950 531-6 , Fax : +66(0) 77 300 569
E-mail : baansamui@see2sea.com

Bangkok : 13th Fl., Ocean Tower 1, 170/38 Ratchadapisek Rd., Klong Toey, Bangkok 10110, Thailand.
Tel : +66(0) 2 261 2986 -9 , Fax : +66(0) 2 261 2984
E-mail : sales@see2sea.com
www.see2sea.com

Welcome Home



BAAN SAMUI RESORT

